

## **Intersectoral action / partnerships for welfare**

-

Joris Beaumon



# Presentation

---

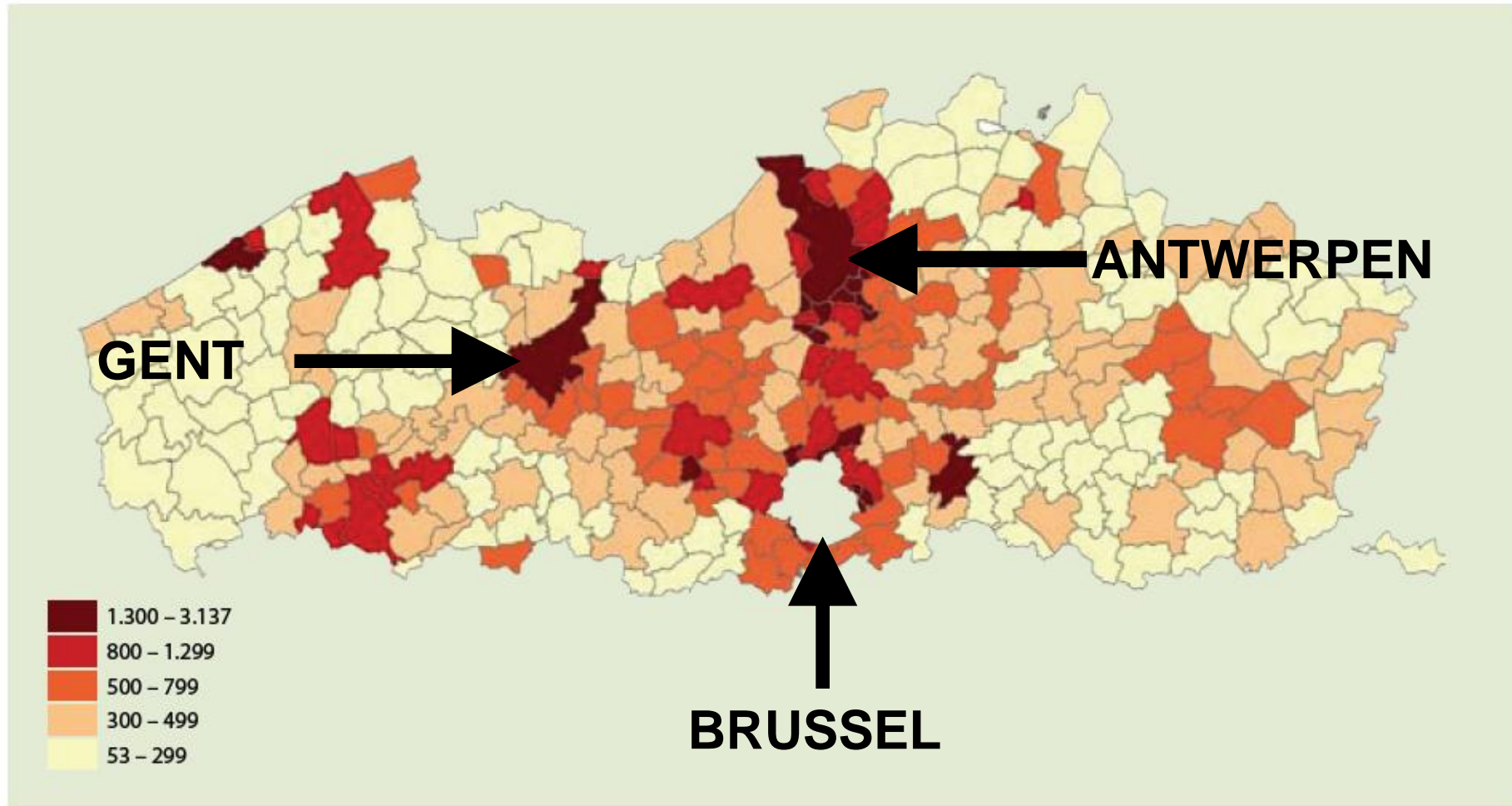
1. (Social exclusion in) Ghent
2. Local social policy as a possible answer
3. Implementation in Ghent
4. Local social policy Ghent today



# Demography

Population density, by municipality, Flemish Region.

Average population density (number of inhabitants per square km, 1/1/2008)



# (social exclusion in) Ghent

---

## City of Ghent:

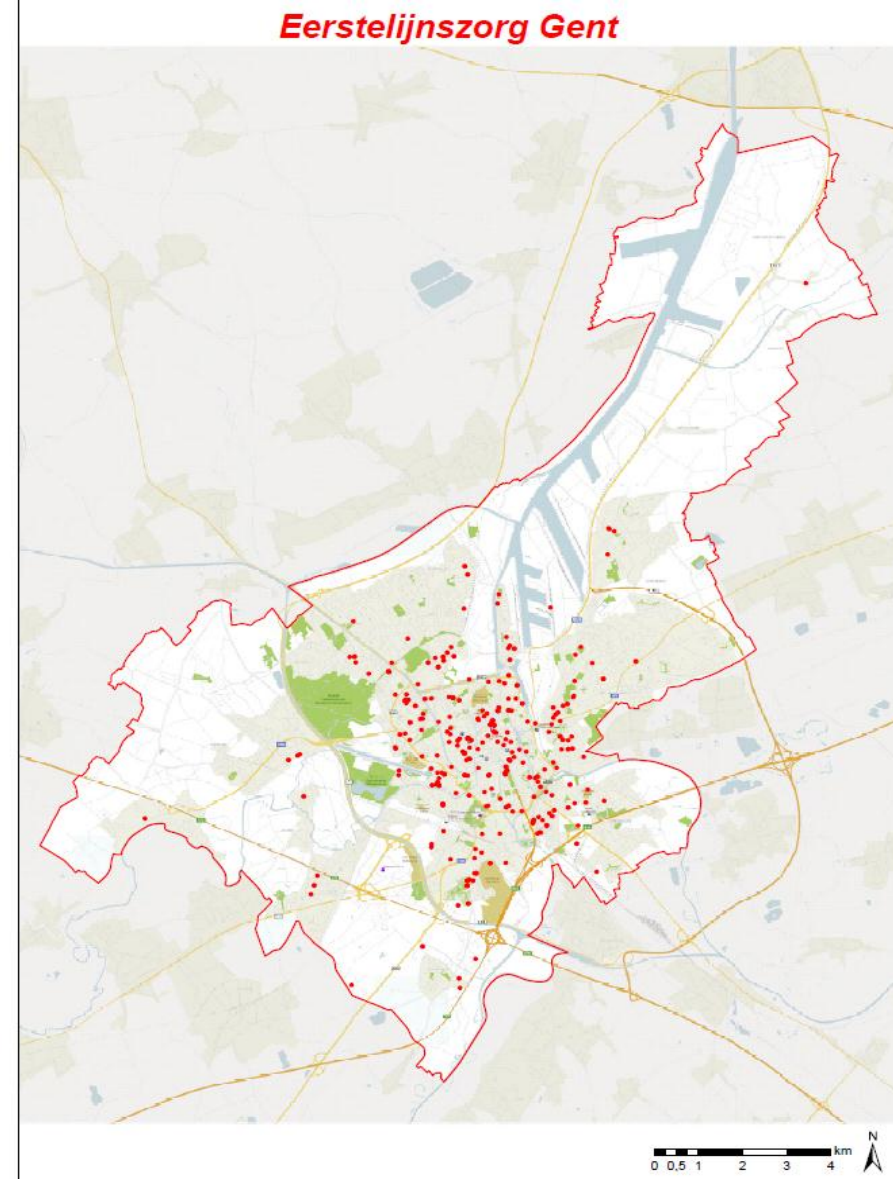
- approx. 250 000 inhabitants
- Central function for East of Flanders
- More than half of the Turkish or Moroccan population in Ghent risks to end in poverty (less than 60 % median income)
- The number of births in underprivileged families has increased during the past years to **1 into 5 births !!**
- More than 1,8 % live below the subsistence level. (the highest number in Flanders)

# (social exclusion in) Ghent

But also...

- extended efforts of the Public Social Welfare Center (OCMW) and City of Ghent
- hundreds of welfare organisations in Ghent
- thousands of professionals and voluntary workers active in welfare work

...and off course: Belgium's complex state-structure





# Local social policy, an answer

- Belgian constitution: several fundamental social wrights embedded -> guarantee for a decent life
- But: fragmentation, problems of accessibility, multi-dimensional aspect of social problems, ...
- Flemish decree local social policy 2004
  - **Subsidiarity**: more impact for local authorities
  - **Coöperation** City - Public Center of Social Welfare !
  - **Participation** of the other social organisations in planning ánd implementation
  - Focus on jointly eliminating barriers, intersectoral approach and accessibility of welfare

# Local Social Policy: Ghent approach

---

- Joint jurisdiction: City + Public Social Welfare Centre
- Joint 'engine': cel LSB (including local actors)
- Strong participation of **local actors**
- Triple focus: **Network, Support and Action**
- Yearly renewed actionprograms -> wide range; flexibility; partner search; projectfunding;...
- 2010: re-focus on 4 main target point
  - Homelessness
  - accessebility of services
  - Signaling (bottum up)
  - Prevention of debts

# Local Social Policy Ghent: network approach

---

## Network

- 12 Fora: themes or target groups
  - Representation of sector
  - Included representation of 'target groups'
  - Chairman: allways independed organisation
  - 1 forum specifically for people in poverty/target groups
- Steering group: links between the sectors
- Linking with other platforms: community welfare Platform, cel poverty reduction, ...



# Local social policy today

---

- Modification flemish decree (2013)
    - Essence/spirit remains, but without obligations
  - New local government (2013)
    - re-focus on core businesses
      - **City:** local welfare policy (accessibility of social rights/services)
        - New networkstructure: council of directors
        - Working with bottom up signals
        - Initiating intersectoral actions (eg 'house of the child')
      - **Public Social Welfare Center:** poverty reduction
        - Broad participation of stakeholders
        - Poverty reduction plan (2014-2019)
        - Two yearly action programs (joint actions)
-

---

## **Joris Beaumon**

Head of staff - Cel poverty reduction

OCMW Gent,

Sint Martensstraat 13,

9000 Gent

Tel. 09 266 99 02 - 0477 56 01 63

[joris.beaumon@ocmwgent.be](mailto:joris.beaumon@ocmwgent.be)